

# Performer

## Fund Fact Sheet - Retail Investor

### AFRIS Range

November 2022

**Launch date**  
September 1997

**Fund size**  
R 191.3 billion

**Fund description**  
Combined - Multi asset class - Discretionary

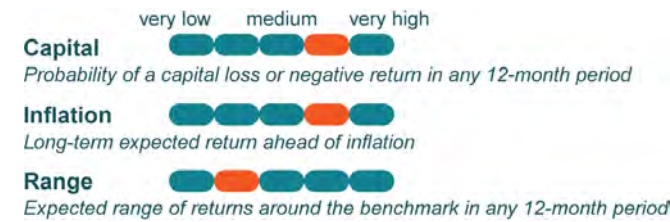
#### Background

THIS PORTFOLIO PRICING IS ONLY AVAILABLE FOR THE RETIREMENT INCOME SOLUTION

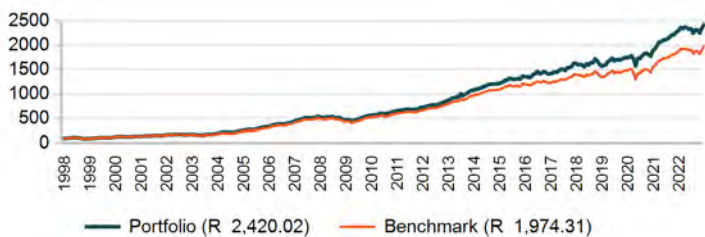
#### Portfolio description

Performer is a moderate- to high-risk, multi-asset portfolio that aims to outperform the Alexander Forbes Investable Global Large Manager Watch™ Median. In addition, the portfolio targets CPI inflation-beating returns of CPI +5% over rolling five-year periods. The portfolio's asset allocation is dynamic to allow it to competitively participate in market recoveries and protect in falling markets. The portfolio blends diversified strategies including alternatives, both locally and offshore, to manage risk and enhance performance potential by capturing different sources of returns.

#### Risk profile



#### Value of R100 invested since inception



#### Manager weightings

Manager	Weight
Ninety One Domestic Balanced	18.0%
M&G Domestic Balanced	17.7%
Allan Gray Domestic Balanced	10.5%
Truffle Domestic Balanced	10.1%
Aluwani Domestic Balanced	6.3%
Performer Domestic Hedge Fund	4.7%
Private Markets SA	2.3%
Performer International	28.9%
Performer Africa	1.2%
Banker	0.1%
Transition Portfolio AM	0.2%
<b>Total</b>	<b>100.0%</b>

#### Risk stats over 3 Years

	Portfolio	Benchmark
Annualised standard deviation	10.6%	11.7%
Sharpe ratio	0.7	0.5
Maximum drawdown	11.9%	14.8%
Positive months	69.4%	72.2%

#### Benchmark allocation

Combined asset class	Benchmark	Allocation
Balanced	AF Investable Global LMW Median	100.0%
<b>Total</b>		<b>100.0%</b>

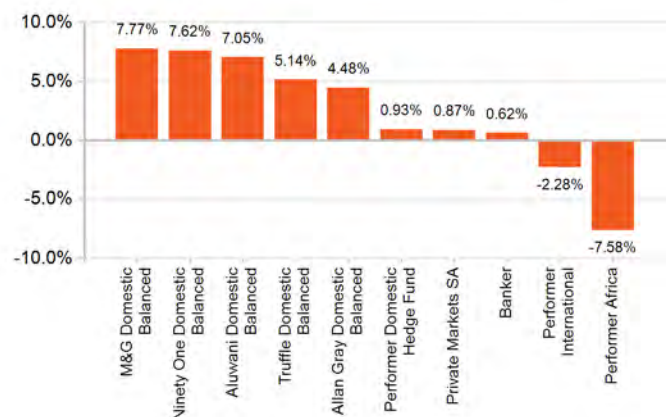
#### Market summary

	1 Month	3 Months	1 Year	3 Years
FTSE/JSE All Share	12.33%	12.96%	11.07%	14.82%
FTSE/JSE SWIX	9.95%	11.03%	11.36%	11.09%
FTSE/JSE Capped SWIX ALSI	9.62%	11.03%	12.64%	12.28%
FTSE/JSE SA Property	6.32%	10.58%	7.20%	-4.43%
All Bond Index	3.91%	2.81%	6.40%	7.52%
STeFI Composite index	0.51%	1.49%	4.98%	4.81%
MSCI AC World	-0.42%	2.47%	-6.07%	11.99%
FTSE WGBI	-3.39%	-2.12%	-13.53%	-0.86%

#### Portfolio returns

	Portfolio	Benchmark
1 Month	3.43%	4.03%
3 Months	4.80%	5.59%
YTD	2.58%	2.50%
1 Year	5.60%	6.06%
3 Years	11.70%	10.21%
5 Years	8.28%	7.15%
10 Years	10.83%	9.55%
15 Years	10.71%	9.70%
20 Years	13.96%	13.06%
Since Inception	13.50%	12.58%

#### Underlying returns (1 month to November 2022)



## Effective asset allocation exposure

<b>Local</b>	<b>70.1%</b>
<b>Equity Excluding Property</b>	<b>42.1%</b>
Basic Materials	12.2%
Financials	11.1%
Consumer Goods	5.5%
Technology	4.9%
Consumer Services	4.3%
Telecommunications	1.6%
Industrials	1.2%
Other Securities	0.8%
Healthcare	0.6%
<b>Property</b>	<b>1.8%</b>
<b>Bonds</b>	<b>16.6%</b>
< 12 Months	1.3%
1 - 3 Years	0.7%
3 - 7 Years	2.2%
7 - 12 Years	4.2%
12+ Years	8.1%
<b>Cash</b>	<b>3.4%</b>
<b>Commodities</b>	<b>0.2%</b>
<b>Alternatives</b>	<b>6.1%</b>
<b>Global</b>	<b>28.8%</b>
<b>Equity Excluding Property</b>	<b>21.7%</b>
<b>Property</b>	<b>0.8%</b>
<b>Bonds</b>	<b>3.2%</b>
<b>Cash</b>	<b>1.6%</b>
<b>Commodities</b>	<b>0.1%</b>
<b>Alternatives</b>	<b>1.5%</b>
<b>Africa</b>	<b>1.1%</b>
<b>Equity Excluding Property</b>	<b>0.7%</b>
<b>Property</b>	<b>0.0%</b>
<b>Bonds</b>	<b>0.0%</b>
<b>Cash</b>	<b>0.0%</b>
<b>Commodities</b>	<b>0.0%</b>
<b>Alternatives</b>	<b>0.4%</b>
<b>Balanced</b>	<b>0.0%</b>

## Top 10 equity holdings

<b>Holding</b>	<b>%</b>
NASPERS	3.1%
BRITISH AMERICAN TOBACCO PLC	2.6%
ABSA GROUP LIMITED	2.3%
GLENCORE	2.1%
SASOL	1.9%
FIRSTRAND LIMITED	1.8%
PROSUS	1.8%
STANDARD BANK GROUP	1.6%
MTN GROUP	1.5%
IMPALA PLATINUM HLDS	1.5%
<b>% of total portfolio</b>	<b>20.2%</b>

## Top 10 fixed interest issuers

<b>Issuer</b>	<b>%</b>
SOUTH AFRICA (REPUBLIC OF)	12.4%
MARSH & MCLENNAN COS INC	1.2%
STANDARD BANK GROUP LTD	0.9%
M&G INVESTMENTS	0.8%
BERESFORD FUNDS PLC	0.6%
FIRSTRAND BANK LIMITED	0.5%
YIELDX	0.4%
ESKOM HOLDINGS SOC LTD	0.4%
COMMUNITY GROWTH MANAGEMENT COMPANY LTD	0.2%
BLACKROCK INC	0.2%
<b>% of total portfolio</b>	<b>17.6%</b>

## Total expense ratio and Transaction cost breakdown<sup>1</sup>

Period (Annualised, rolling one-year period): 01 Nov 2021 to 31 Oct 2022

Average annual service charge (incl VAT)	0.50%
Underlying manager performance fees expense	0.21%
Underlying global manager expense	0.08%
Underlying fund expense	0.25%
Other expenses	0.00%
<b>Total Expense Ratio (TER)</b>	<b>1.04%</b>
<b>Transaction Costs (TC)</b>	<b>0.14%</b>
<b>Total Investment Charges (TER + TC)</b>	<b>1.19%</b>

## FAIS notice and disclaimer

Alexander Forbes Investments Limited is a licenced financial services provider in terms of Section 8 of the Financial Advisory and Intermediary Services Act, 37 of 2002, as amended, FAIS licence number 711. This information is not advice as defined and contemplated in the Financial Advisory and Intermediary Services Act, 37 of 2002, as amended. Investment returns are calculated via Statpro Performance and Attribution. Past investment returns are not indicative of future returns. This product is not guaranteed. Please be advised that there may be representatives acting under supervision. Company Registration Number: 1997/000595/06. Pension Fund Administrator No.24/217. Long Term Insurance Act No. 00018/001. Postal address: P.O. Box 787240, Sandton 2146. Physical Address: 115 West Street, Sandown, 2196. The complaints policy and conflict of interest management policy can be found on the Alexander Forbes Investments website: <http://www.alexforbes.com>. A Member of the Alexander Forbes Group.

---

## Notes

1. Total Expense Ratio (TER): The percentage of the value of the portfolio that was incurred as expenses relating to the administration (charges, levies and fees) of the portfolio. TER is calculated over a rolling one year period (or since inception where applicable) and annualised to the most recently completed quarter. The TER as at the end of October 2022 is calculated using a rolling one year period. A higher TER does not necessarily imply a poor return, nor does a low TER imply a good return. The current TER may not necessarily be an accurate indication of future TERs. Transaction cost (TC): The percentage of the value of the portfolio that was incurred as costs relating to the buying and selling of the assets underlying the portfolio. Transaction costs are a necessary cost in administering the Fund and impacts returns. It should not be considered in isolation as returns may be impacted by many other factors over time, including market returns, the type of financial product, the investment decisions of the investment manager and the TER. Calculations are based on actual data where possible and best estimates where actual data is not available. Total investment charge (TIC): This percentage of the portfolio was incurred as costs relating to the investment of the portfolio. It is the sum of the TER and TC.
2. Market data is sourced from Datastream. The FTSE/JSE Africa Index Series is calculated by FTSE International Limited ("FTSE") in conjunction with the JSE Securities Exchange South Africa ("JSE") in accordance with standard criteria. The FTSE/JSE Africa Index Series is the proprietary information of FTSE and the JSE. All copyright subsisting in the FTSE/JSE Africa Index Series index values and constituent lists vests in FTSE and the JSE jointly. All their rights are reserved.
3. All holdings information is based on latest available data.
4. There may be differences in totals due to rounding.
5. Manager weightings and underlying returns for the month reflect a combination of managers and building blocks in the portfolio.
6. All returns are before deduction of Alexander Forbes Investments' policy fees, performance-based fees and global manager cost, but net of other expenses. Returns for periods exceeding one year are annualized and all returns are quoted in Rands. Past investment returns are not indicative of future returns.